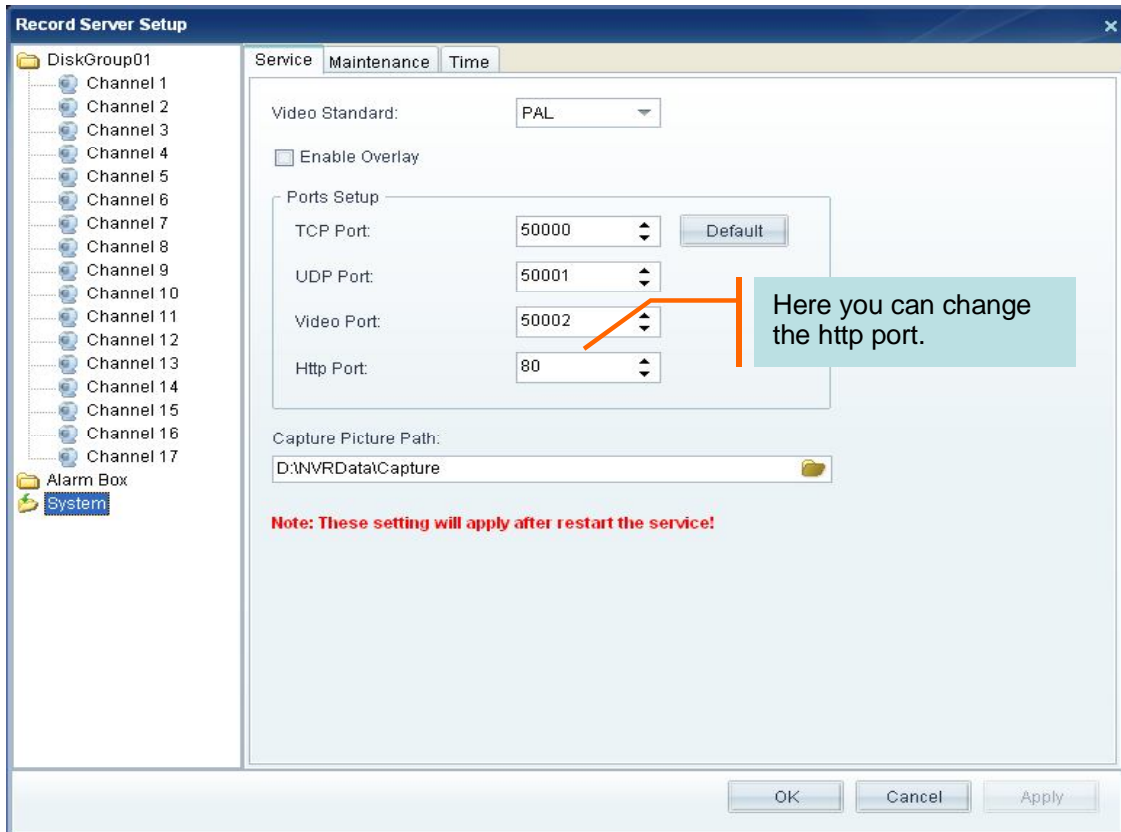


The Default WEB access port (HTTP port) is 80.

In some situation, the 80 port is used or blocked by other application, and then you may have to set another Web port. You can change HTTP port in NVR+ server.



For example, you can change the HTTP port to 85, and then you have to access this address from IE: **http://192.0.0.99:85**.

(Assuming 192.0.0.99 is the remote NVR+ server's IP address).